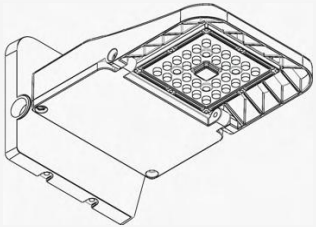
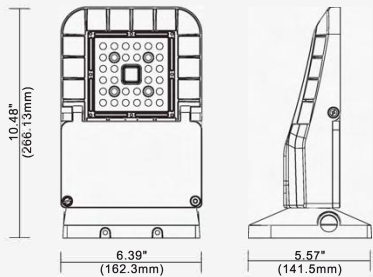




Line Drawing



Dimensions



Product Description:

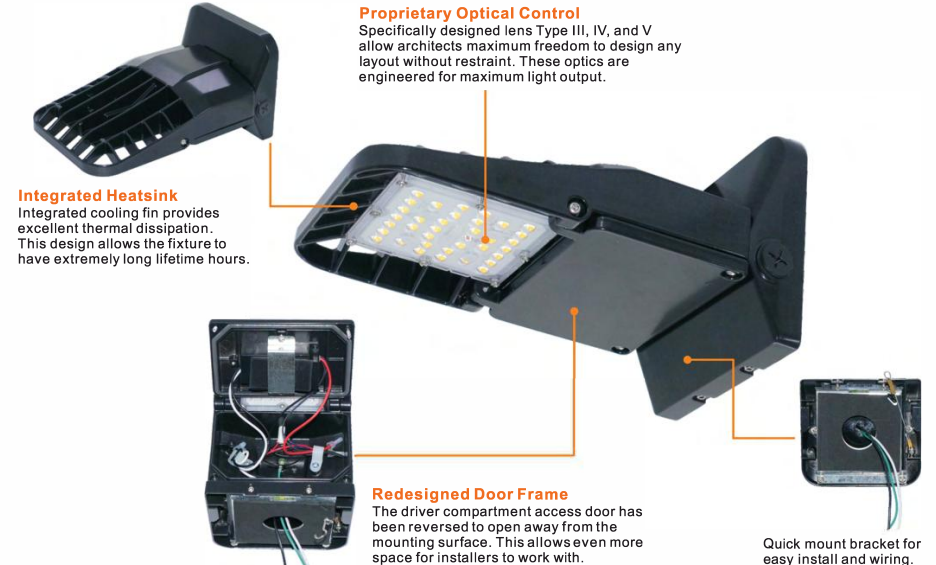
This sleek and modern luminaire has been designed to handle any environment. With an appealing slimline design along with one of the highest lumen performance on the market, this versatile fixture can be used as a flood light or an area light. Including a multitude of mounting options, surge protection devices, IOT photocell capability, and the most technologically advanced LED's on the market, the LED-3015 is ready to conquer the lighting landscape.

Optional mounting and Kelvin color\* with adder.

Features:

- LISTING**
  - ▶ UL and cUL listed for wet locations, DLC Premium
- HOUSING**
  - ▶ One piece die-cast aluminum body with die-cast hinged driver access for easy installation
- LEDS**
  - ▶ The most technologically advanced LED chips in the market
- FINISH**
  - ▶ UV stabilized powder coated finish
- LENS**
  - ▶ Optional Type III, Type IV, Type V optics
- OPTIONS**
  - ▶ Finish - Bronze. Color option with adder
  - ▶ Standard 4kV surge

Product Description:



Performance Data

Model NO.	System Watts	Lumens	Lpw
LED-3015-L14	12W	1513	126
LED-3015-L35	23W	3266	137

Specification:

Example: LED-3015

Model No.	SystemWatts	Input Voltage	CRI	Color Temp	Distribution	Option		Finish	Starting Temp
						Accessories	Mounting		
LED-3015	12=12W	UNV=120-277V	7=70+	30=3000 K	T3=Type III T4=Type IV	PE=Photocontrol	W=Wall Mount	BZ=Bronze	-40°C
	23=23W			40=4000 K					
				50=5000 K					